

Accessing tracking system



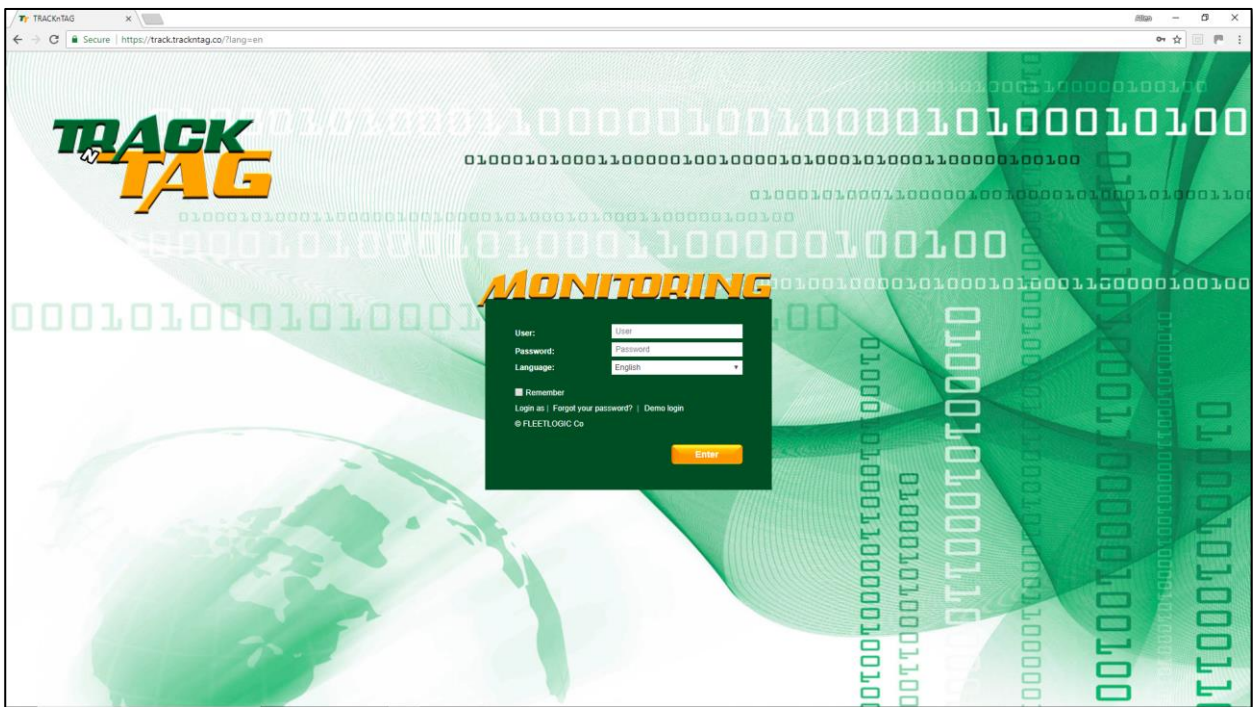
PC Access

To access the tracking system from your PC/Laptop, use the below link.

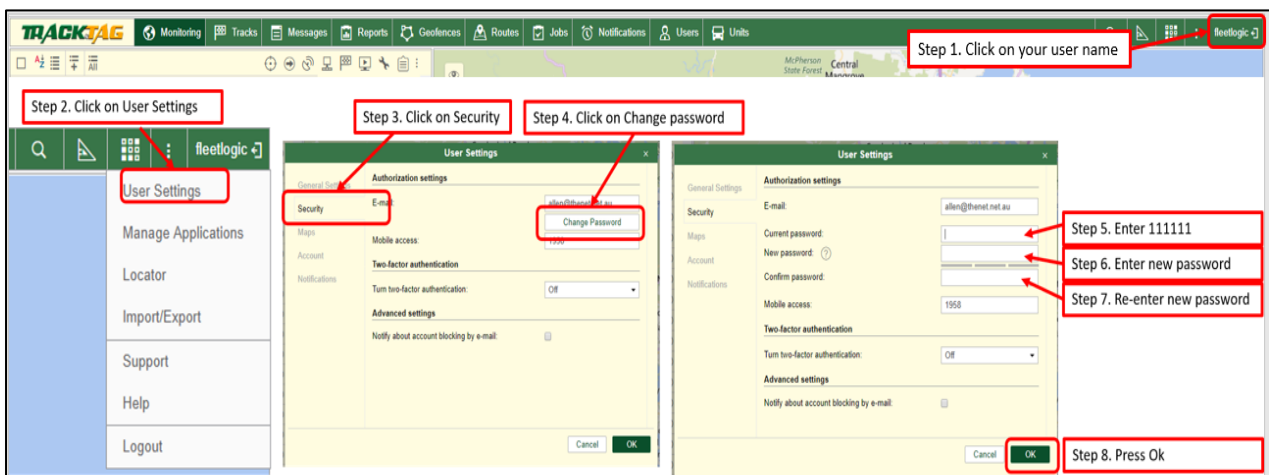
We have set up the user account attached to the email, so you can access.

Access point

<https://track.trackntag.co>



It is important to change your password from the default 111111. This is done by following the below instructions:



Please ensure you change your password using a PC web browser before using either Mobile App, because there is no option available in them for changing your password.

User Manual

The user manual is an online-based item that can be found at the following link:

<https://docs.wialon.com/en/hosting/doku.php>

Mobile Access

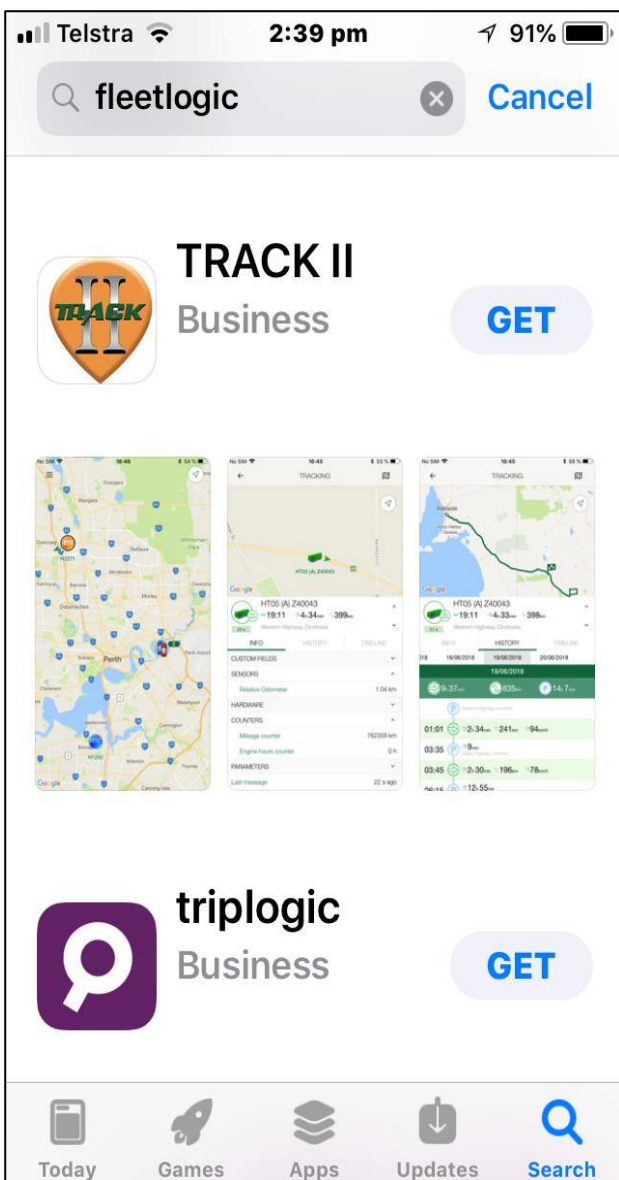
To use a smart phone or tablet to access tracking, download 'TRACK II' from either the App Store (Apple) or Google Play store (Android).

The same username and password are used for both PC access and Mobile access.

Use the following Apps:

Apple Products

Go to App Store and search for FLEETLOGIC, then select TRACK II.



Android Products

Go to Google Play App Store and search for FLEETLOGIC, then select TRACK II.

